

## SJ46 AJ+ ARTICULATING BOOM



### STANDARD FEATURES

- EASYDRIVE™ Direction sensing drive and steer controls
- SKYRISER™ True vertical rise
- AXLDRIIVE™ Axle-based 4WD system
- Operator controlled locking rear differential and limited slip front differential
- Oscillating steer axle
- Drivable at full height
- 45% Gradeability
- Wet disc SAHR brakes (rear axle)
- Dual module control system with SKYCODED™ colour coded and numbered wiring
- Deutz D2.9L4 diesel or Kubota WG2503 dual fuel engine
- Swing out engine tray
- Swing up cowlings for easy access
- Lockable power disconnect switch
- Proportional controls
- 660 lbs (300 kg) Capacity
- 30" x 72" Platform
- Bolt-in platform railing system
- Lanyard attachment points
- Dual-entry sliding mid rails
- Secondary Guarding Electrical (SGE)
- Overload sensing system
- 110V AC Outlet on platform with GFI
- Tilt alarm (5.0° x 5.0°) with drive and lift cut-out
- Single point emergency lowering
- Hourmeter
- Operator horn
- All motion alarm
- 355° Non-continuous turret rotation
- Tie down / lifting lugs
- 10 x 31 Grip Lug solid tires
- Telematics ready
- 2-Year Gold Leaf Warranty (5-year structural warranty)

### OPTIONS

- Glazier kit
- Pipe rack
- Tool caddy
- Flashing light
- 30" x 60" Platform
- Side spring hinged entry gate
- Auxiliary top rail (30 x 72" platform only)
- 3.5 kW Generator (Includes hydraulic oil cooler)
- Welder ready package (Includes 12 kW generator, hydraulic oil cooler, 3-phase power connection in platform, and welder mount)
- Welder package (Includes 12 kW generator, hydraulic oil cooler, 3-phase power connection in platform, welder mount, and Lincoln V275-S welder)
- Cold weather start kit (Recommended for regions where average monthly low temperatures can reach 14°F / -10°C (Includes cold start engine oil, battery blanket, hydraulic tank heater, and engine load kit (Deutz D2.9L4))
- Arctic weather package (Recommended for regions where average monthly low temperatures can reach -0.4°F / -18°C (Includes arctic engine oil, battery blanket, hydraulic tank heater, engine load kit (Deutz D2.9L4), block heater, arctic hydraulic oil, arctic platform rotator and arctic gear oil in the axles and swing drive glow plugs, arctic hydraulic hoses (all), and oversized foot switch cover are also included (standard equipment))
- Positive air shut-off valve (diesel only)
- Hydraulic oil cooler
- Bio oil
- Control box cover
- Grip lug solid non-marking tires
- Non-destructive testing
- ELEVATE telematics

† Standard lead times may be increased when optional equipment is added, consult factory.  
‡ Capacities and machine weights may differ when options are added.

<< go back

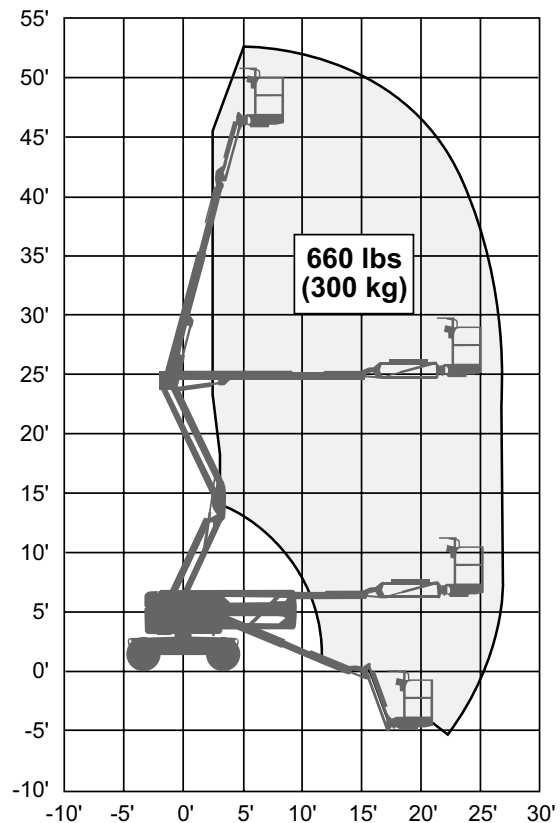
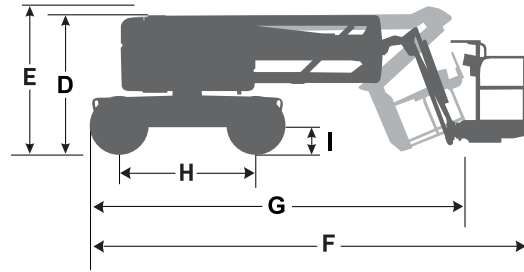
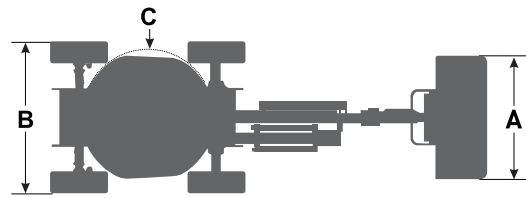
# SJ46 AJ+ ARTICULATING BOOM

**AERIAL  
TITANS**

866-874-0584  
WWW.AERIALTITANS.COM

Dimensions	SJ46 AJ+
Work Height	52' 3.25" (15.93 m)
Platform Height	46' 3.25" (14.10 m)
Horizontal Reach	24' 8.75" (7.54 m)
Up-and-Over Height	24' 5.25" (7.45 m)
<b>A</b> Platform Size	30" x 72" (0.76 x 1.83 m)
<b>B</b> Stowed Width	7' 6" (2.29 m)
<b>C</b> Tailswing	0
<b>D</b> Stowed Height	6' 9" (2.06 m)
<b>E</b> Transportation Height	7' 1" (2.16 m)
<b>F</b> Stowed Length	20' 10" (6.35 m)
<b>G</b> Transportation Length	19' 7" (5.97 m)
<b>H</b> Wheelbase	6' 8" (2.03 m)
<b>I</b> Ground Clearance	15.25" (0.39 m)

Specifications	SJ46 AJ+
Rotation	355° NC
Platform Rotation	170°
Jib Length	4' 8" (1.40 m)
Jib Range +/-	+70° / -75°
Weight	13,200 lbs (5,990 kg)
Gradeability	45%
Turning Radius (Inside)	4' 11.25" (1.50 m)
Turning Radius (Outside)	14' 3" (4.34 m)
Axle Oscillation	5" (12.70 cm)
Drive Speed (High speed)	4.8 mph (7.7 km/h)
Capacity	660 lbs (300 kg)
Maximum Wind Speed	28 mph (12.5 m/s)
Personnel Rating at Max Wind Rating	2
Tire Type	Solid
Tire Size	10 x 31
Diesel Engine	Deutz D2.9L - 48 HP (36 KW)
Dual Fuel Engine	Kubota WG2503 - 61 HP (45 KW)
Fuel Tank Capacity	17 gal. (64 L)
Hydraulic Reservoir	24 gal. (91 L)



SJ46 AJ+ WORKING ENVELOPE

Skyjack Head Office  
55 Campbell Rd. Guelph, ON Canada N1H 1B9  
Sales Inquiries: 1-877-755-4387 (1-877-SJLIFTS)  
Main Switchboard: 1-800-265-2738  
Phone: 519-837-0888  
Fax: 519-837-8104  
Email: skyjack@skyjack.com

[www.skyjack.com](http://www.skyjack.com)

**AERIAL  
TITANS**  
866-874-0584  
WWW.AERIALTITANS.COM

**SKYJACK**  
simply reliable