

# 740AJ SERIES

ARTICULATING BOOM LIFTS



866-874-0584  
WWW.AERIALTITANS.COM



## Performance

Platform Height	74 ft	22.60 m
Horizontal Outreach	51 ft 10 in.	15.80 m
Up and Over Height	25 ft 1 in.	9.78 m
Swing	360° Continuous	
Platform Capacity-Unrestricted	500 lb	227 kg
Platform Rotator	180° Hydraulic	
Jib Length	6 ft	1.83 m
Jib Range of Articulation	130° (+70, -60)	
Weight <sup>1</sup>	36,200 lb	16,420 kg
Max. Ground Bearing Pressure	61 psi	4.27 kg/cm <sup>2</sup>
Drive Speed 4WD	3.0 mph	4.8 km/h
Gradeability 4WD	45%	
Turning Radius		
Inside	7 ft	2.13 m
Outside	14 ft 6 in.	4.42 m

1. Certain options or country standards increase weight.

## Standard Specifications

### Engine

Dual Fuel Engine		
GM Vortec 3000 MPFI	82 hp	61 kW
Diesel Engine		
Deutz D2011L04	48.8 hp	36.4 kW
Fuel Tank Capacity	40 gal	49.21 L

### Hydraulic System

• Capacity	48 gal	181.7 L
------------	--------	---------

### Tires

• Standard	445/55D19.5 Foam-Filled Wide Lug Tread
------------	--

## Standard Features

- Fall arrest platform and boom
- 90 mph (144 kph) jet blast rating
- 6 ft. (1.37 m) articulating jib
- 36 x 72 in (.91 x 1.83 m) low mount platform
- 4WD/4WS
- Fixed Axle
- 2500W generator
- Operator's tool tray and corner tool tray
- 18 x 19.5 in. foam filled wide lug tread tires
- 180 degree hydraulic platform rotator
- Platform console machine status light panel<sup>2</sup>
- 110V-AC receptacle in the platform
- 5 degree tilt alarm/indicator light
- Swing-out engine module
- Gull-wing engine hood
- 12V-DC auxiliary power
- Hourmeter
- Hydrostatic drive
- Proportional controls
- Lifting/tie down lugs
- Horn

2. Provides indicator lights at platform control console for system distress, low fuel, 5 degree tilt light and foot switch status.



## Accessories & Options

- Light Package<sup>3</sup>
- Soft Touch System
- 1/2 in. Air Line to Platform
- On Board Air Compressor
- Welding Lead to Platform
- Alarm Package<sup>4</sup>
- 43.5 Propane Tank
- Cold Weather Start Kit (Ford)<sup>5</sup>
- Cold Weather Start Kit (Deutz)<sup>5</sup>
- Hostile Environment Kit<sup>6</sup>
- Platform Worklights
- Flashing Amber Beacon

3. Includes platform work lights, head and tail lights.  
 4. Includes all motion alarm and flashing amber beacon.  
 5. Includes engine block heater (Ford) or ether assist (Deutz), battery heater, oil tank heater.  
 6. Includes console cover, boom wipers and cylinder bellows.

Note: Some options may increase lead time, and some option combinations may not be available.



866-874-0584  
WWW.AERIALTITANS.COM

# 740AJ SERIES

ARTICULATING BOOM LIFTS

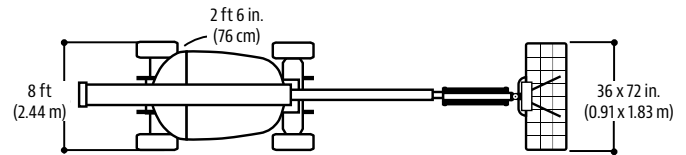
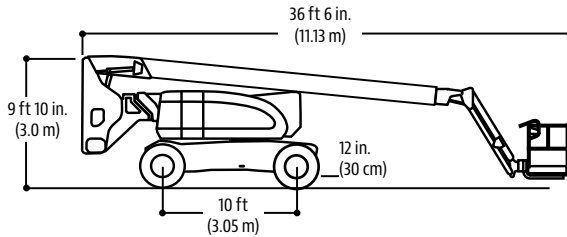
**AERIAL  
TITANS**

866-874-0584  
WWW.AERIALTITANS.COM

**JLG**  
reaching out.

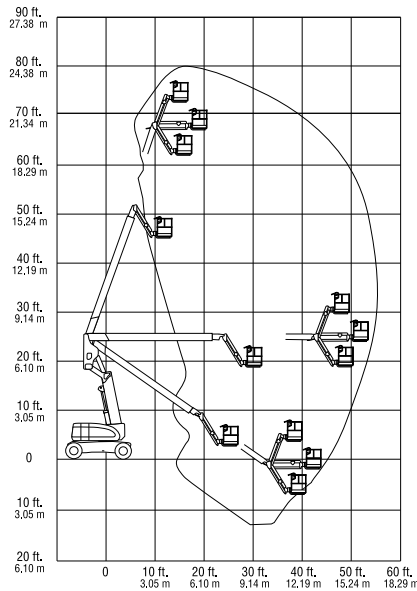
## Dimensions

All dimensions are approximate.



## Reach Diagrams

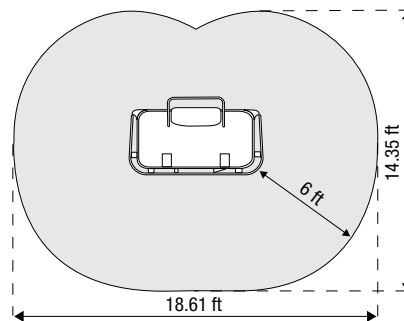
### 740AJ



### Fall Arrest Platform



### Worker Envelope



Platform Area: 18 sq ft  
Total Work Area: 210 sq ft

**<< go back**

## The JLG "1 & 5" Warranty

JLG Industries, Inc. backs its products with its exclusive "1 & 5" Warranty. We provide coverage on all products for one (1) full year, and cover all specified major structural components for five (5) years. Due to continuous product improvements, we reserve the right to make specification and/or equipment changes without prior notification. This machine meets or exceeds applicable OSHA Regulations in 29 CFR 1910.67, 29 CFR 1926.453, ANSI A92.5-2006, and CSA Standard CAN3-B354.2-M82, as originally manufactured for intended applications.

Part No.: 3131116  
R031405  
Printed in USA

**JLG**

**JLG Industries, Inc.**  
1 JLG Drive  
McConnellsburg, PA 17233-9533  
Telephone 717-485-5161  
Toll-free in US 877-JLG-LIFT  
Fax 717-485-6417  
[www.jlg.com](http://www.jlg.com)

**An Oshkosh Corporation Company**